

# ***EUROPEAN STUDENT CARD INITIATIVE***

*Simplifying, facilitating,  
connecting.*



Alexandra Licht  
Theo Mink  
Unit B1 higher Education Erasmus+  
DG EAC

# EUROPEAN STRATEGY FOR UNIVERSITIES

SUPPORTING AND ENABLING  
HIGHER EDUCATION INSTITUTIONS  
ACROSS EUROPE



A European shared vision to support all types of higher education institutions to adapt to changing conditions across all their missions

Priority areas for transformation based and clear objectives

Concrete actions at EU level to enable and support the sector

Synergies with actions and national reforms



# Four flagship initiatives



Expand to **60 European Universities with more than 500 universities by mid-2024**, with an Erasmus+ indicative budget totalling EUR 1.1 billion for 2021-2027.



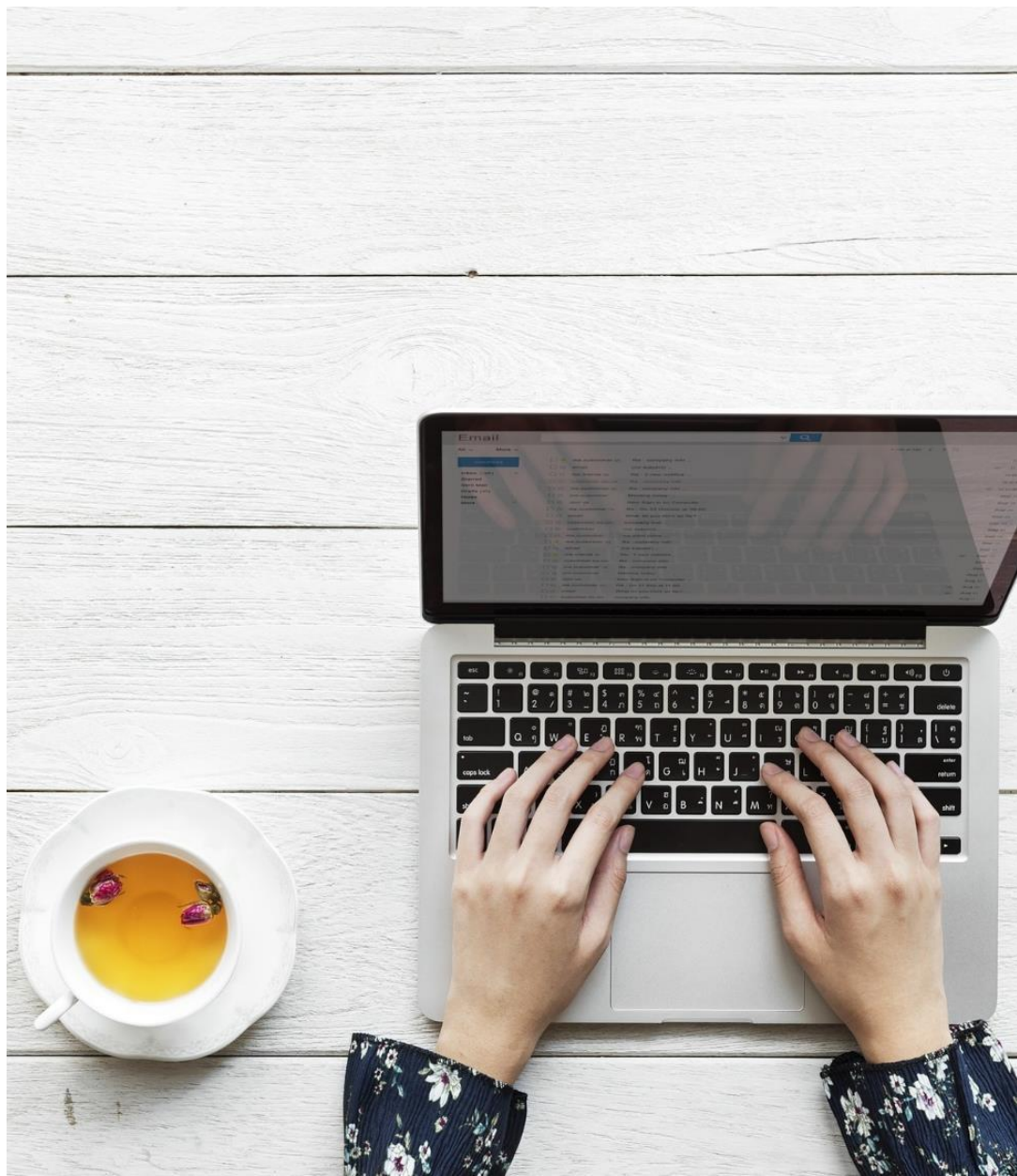
Work towards a **legal statute for alliances** of higher education institutions: pilot as of 2022 under Erasmus+ the implementation of existing European instruments



Examine options and necessary steps towards a **joint European degree**: pilot as of 2022 under Erasmus+ the first steps towards a joint European degree, in particular the development of European criteria for the award of a European Degree label



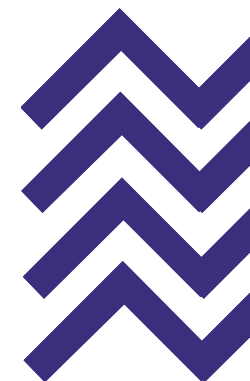
Scale up the **European Student Card initiative by starting deploying a unique European Student Identifier** to all mobile students in 2022 and to all students in universities in Europe by mid-2024



## Goals of ESCI



- Green Erasmus+ programme administration through paperless workflows
- Digital Erasmus+ programme through once-only principle and efficiency gains for mobility management
- More inclusive Erasmus+ programme through more ready made and more targeted communication with students
- Smoother mobility experience abroad and a sense of a European student identity

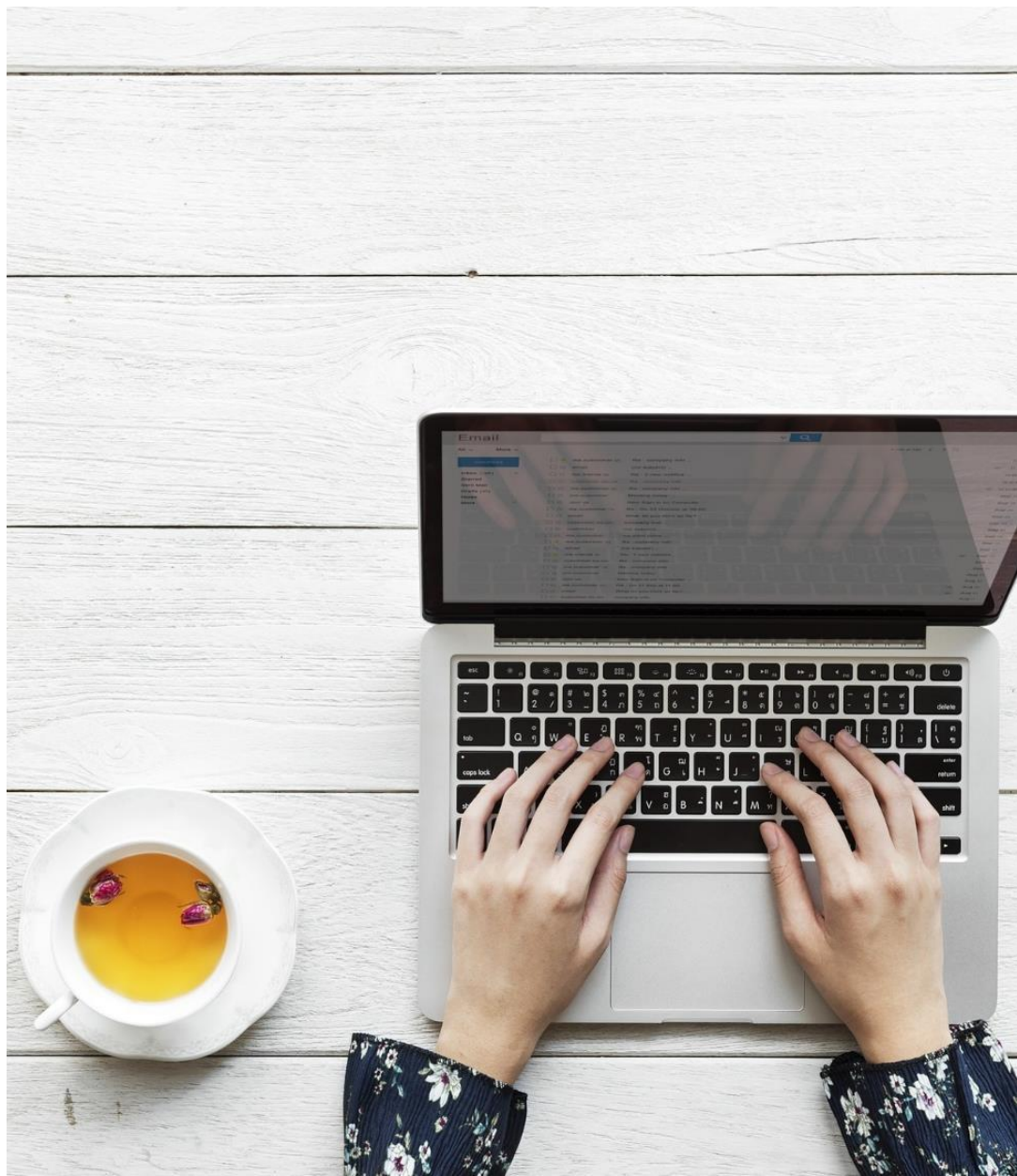




## Turning point in the European Student Card Initiative

- European Strategy for Universities (January 2022)
- Council Recommendation on building bridges for effective European higher education cooperation (January 2022)





## How do we get there?



Initiatives entailed under ESCI:

1. Erasmus Without Paper (EWP)
2. EWP Dashboard
3. European Student Identifier
4. MyAcademicID
5. Erasmus+ App
6. European Student Card



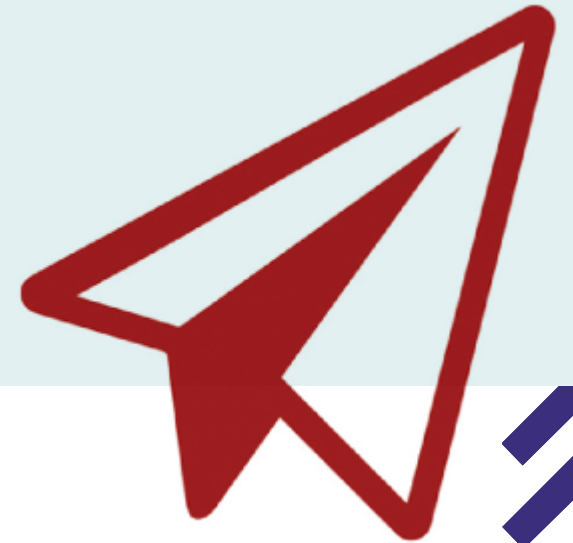
# Erasmus Without Paper EWP

- Aims to pave the way for Erasmus coordinators to manage mobilities more efficiently by replacing paper exchanges by data exchanges between IT-systems.



# EWP Network

- *Interconnects a multitude of student information systems whether individual universities or third-party providers which represent multiple institutions through the use of [APIs](#) (i.e. connectors between the Network and the users)*

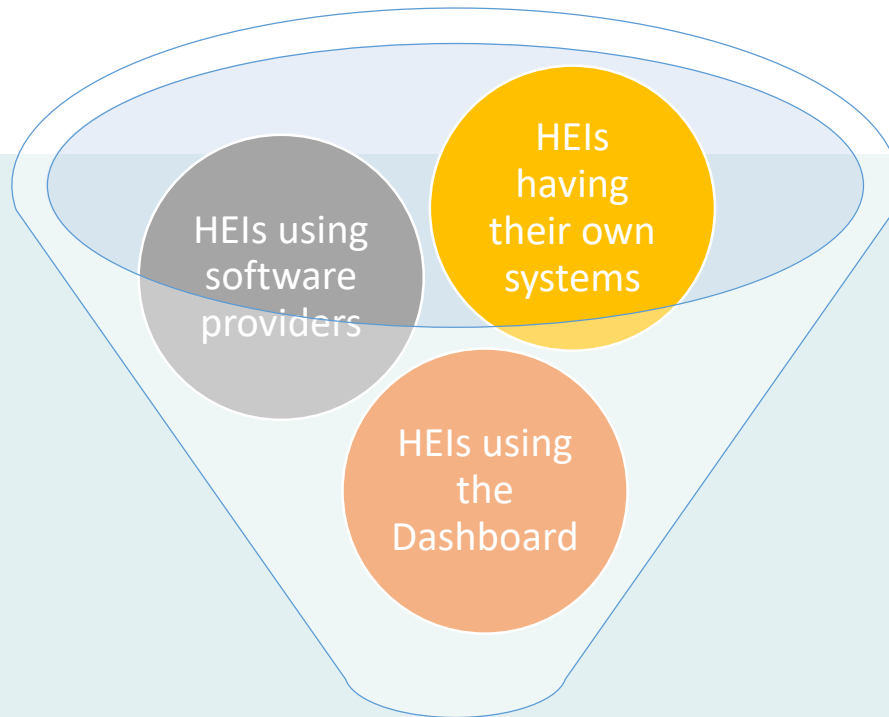




# EWP Dashboard

- *Provides a web solution for exchanging student data electronically for HEIs lacking the required SIS software.*





Efficient digital way to manage  
Erasmus+ student mobility

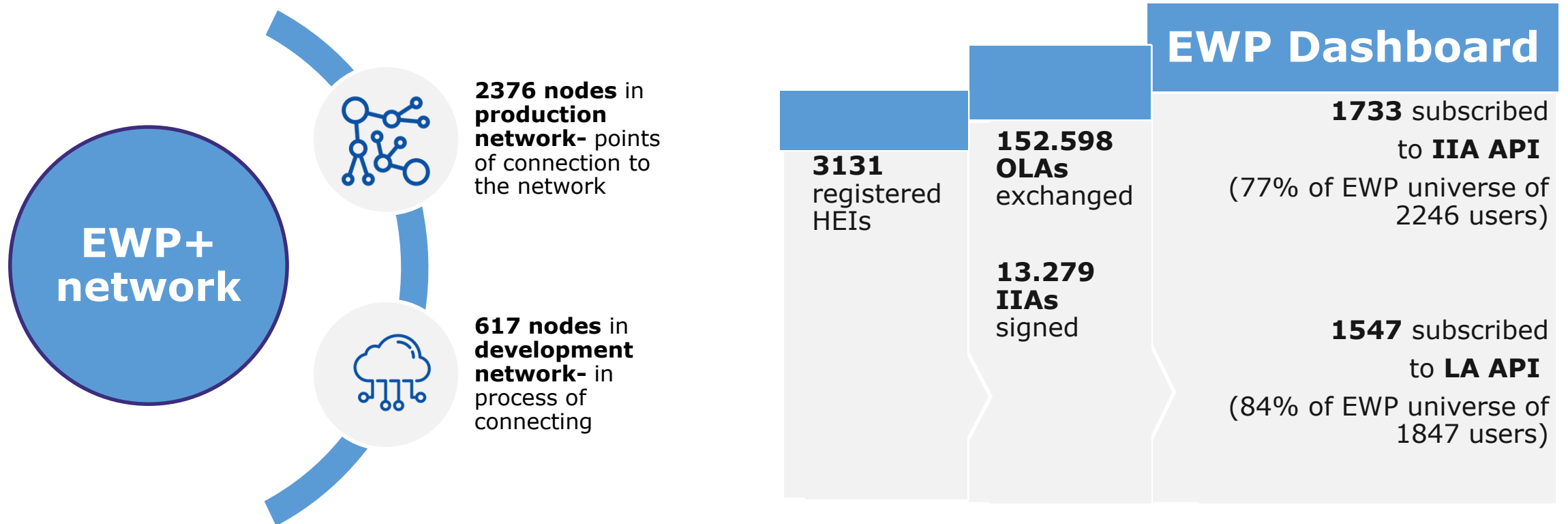




# Erasmus Without Paper Network



# Current traffic volume – February 2022



# Clarifications of timeline of IIA- note to NA directors (58)

- Academic year 2021/2022 has been considered as a transitional year
- This transitional year is **extended until the end of the calendar year 2022** (31/12/2022), after which digital readiness (which is part of the ECHE commitments) will become subject to a monitoring process by National Agencies.
- ECHE monitoring guidelines and precise criteria for the fulfillment of the ECHE commitments in the area of digitalization will be published in the upcoming weeks
- Mobility flows in academic year 2022-2023 will need to be captured either by **paper agreements or by “old” IIA versions** from the previous programmes accompanied by email exchanges.
- HEIs are **strongly encouraged to exchange digital IIAs asap (already for mobilities starting at fall 2022)** and not to wait until 31/12/2022
- The EWP+ Consortium is committed to setting up a **Centralised Service Desk** to support HEIs and to putting in place a **governance structure** that will steer this process





# Clarifications on LA and ESI

- ESI to become mandatory field in OLA
- LA to be digitalized

Same deadline as IIAs - By the end of the current calendar year 2022

**More information, guidelines and clarifications will be shared with the national agency in the upcoming weeks**



## Where next for ESCI?

One framework contract with two sub-service contracts with a 48 months duration – **started in January 2022**

### **Part 1- Erasmus without Paper**

*Focuses on infrastructure in and around EWP:*

- *Interoperability improvement*
- *Dashboard improvement*
- *Further digitalization of mobility administration*
- *Incorporation of the E+ App after June 22*
- *Improve support services to HEIs and students*

### **Part 2- European Student Card**

*European Student Card and all the services around it:*

- *Incorporating European Identity into existing cards (hologram and QR)*
- *Enable ecard interoperability (Virtual card) with Erasmus+ app*
- *On and off campus services*
- *Communication towards students*

January 2022-December 2024



erasmus<sup>+</sup>  
without paper





## Key EWP+ tenets

Business  
continuity

Results  
oriented

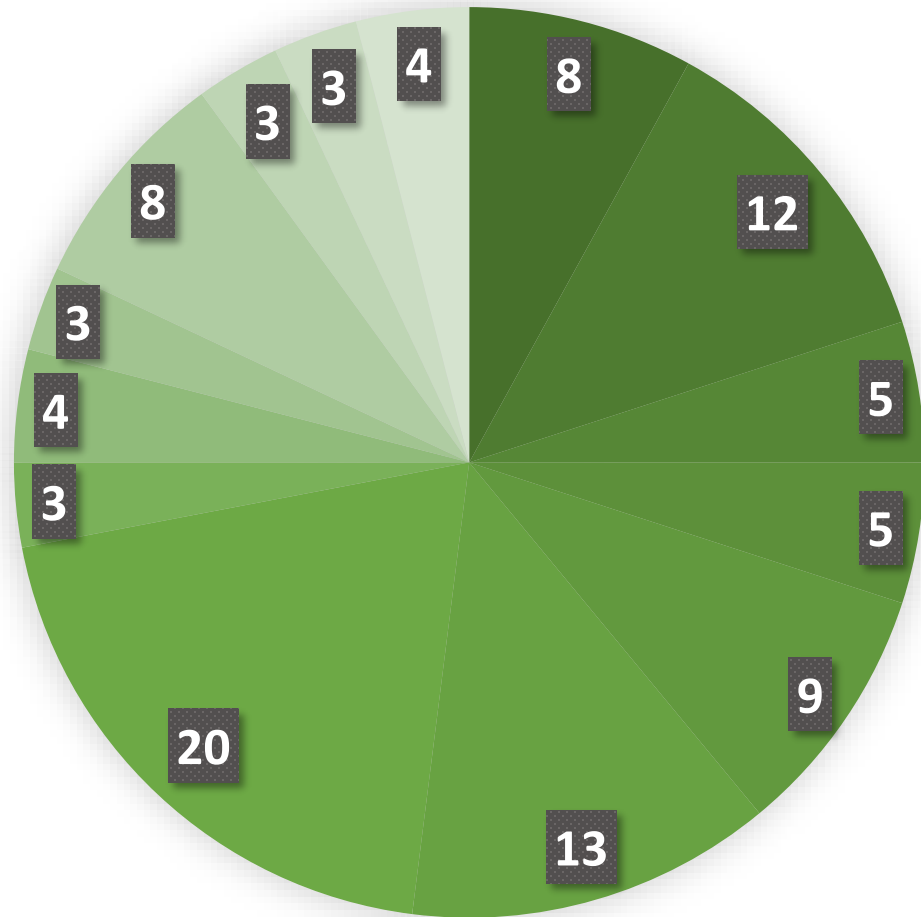
Iteration and  
evolution

Multi  
stakeholder

By universities  
for  
universities



# EWP+ envisaged deliverables



- EWP Dashboard enhancements
- EWP Network reinforcement
- EWP helpdesk
- EWP governance
- Outreach & communication
- Analysis of current systems
- Preparation enhanced infrastructure
- Further development
- Dashboard as service (continuity)
- App as service (continuity)
- ESI adoption
- Change management within HEIs
- Specialised support
- Programme management



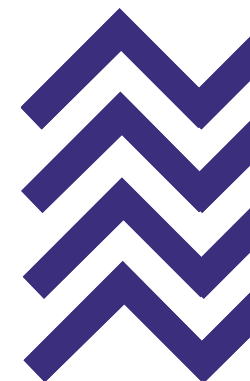
- *Continued availability of the digital infrastructure*
- *Enhanced helpdesk*
- *Addressing technical debt accrued in the last year*
- *Outreach and communication towards community*



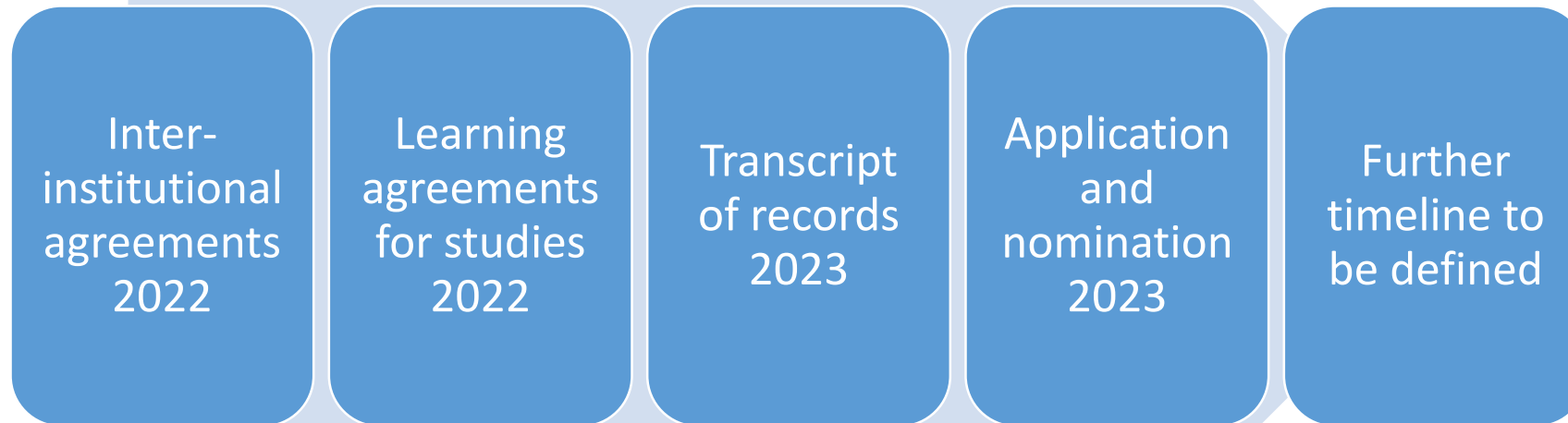


## Activities extended onto 2023

- *Robust and participatory governance model*
- *Mainstreaming ESI (R2)*
- *Support for change management in HEIs (R2)*
- *Programme management environment (R2)*



# Erasmus+ digitalisation timeline





# The Erasmus+ App

# Available features on the Erasmus+ App



- Ability to manage administrative procedures for EWP Dashboard users
- ESI-based European Student Card
- Multilingual information on mobility opportunities
- Deals, Tips & Stories
- Events by HEIs



# Future features of the Erasmus+ App



- Ability to manage administrative procedures for all students and expansion to more admin processes
- Fully digital European Student Card
- Integration with Online Linguistic Support
- Review of mobility experience
- Much more...





# Tips Competition Campaign

- **Aim:**
  - Mobile students creating accounts and submitting tips for fellow students
- **Duration: Sep 21 – Mar 22**
- Erasmus Destination of the Year to be announced at Erasmus Generation Meeting organised by ESN in Porto on 10 April



LEAVE YOUR  
**TIPS & WIN**

Help other students by leaving tips.  
Win amazing prizes!  
*Your Erasmus+  
in one App*

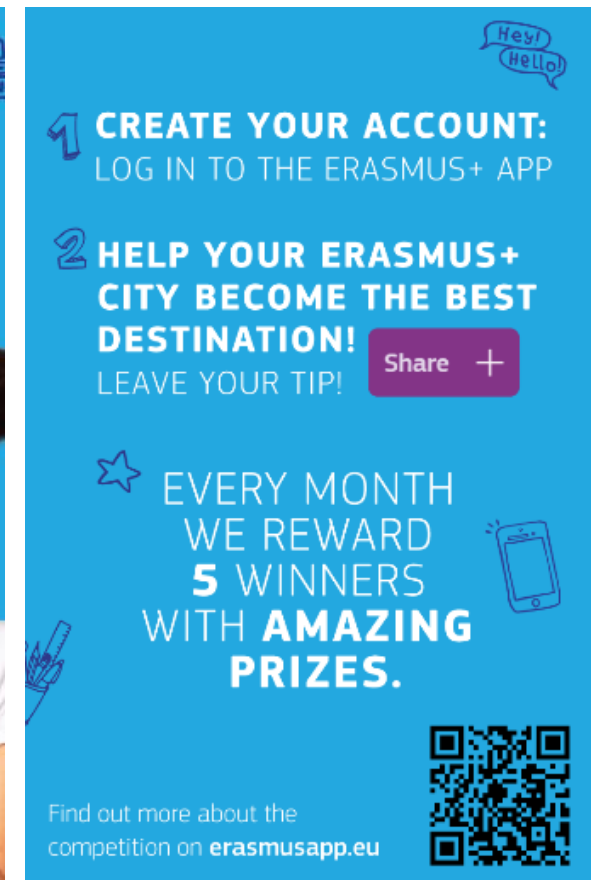
Hey!  
Hello!

Share +

EVERY MONTH  
WE REWARD  
**5 WINNERS**  
WITH **AMAZING PRIZES.**

Find out more about the  
competition on [erasmusapp.eu](https://erasmusapp.eu)

Find out more about the competition on [erasmusapp.eu](https://erasmusapp.eu)



LEAVE YOUR  
**TIPS & WIN**

Help other students by leaving tips.  
Win amazing prizes!  
*Your Erasmus+  
in one App*

Hey!  
Hello!

Share +

EVERY MONTH  
WE REWARD  
**5 WINNERS**  
WITH **AMAZING PRIZES.**

Find out more about the  
competition on [erasmusapp.eu](https://erasmusapp.eu)

Find out more about the competition on [erasmusapp.eu](https://erasmusapp.eu)



# European Student Identifier



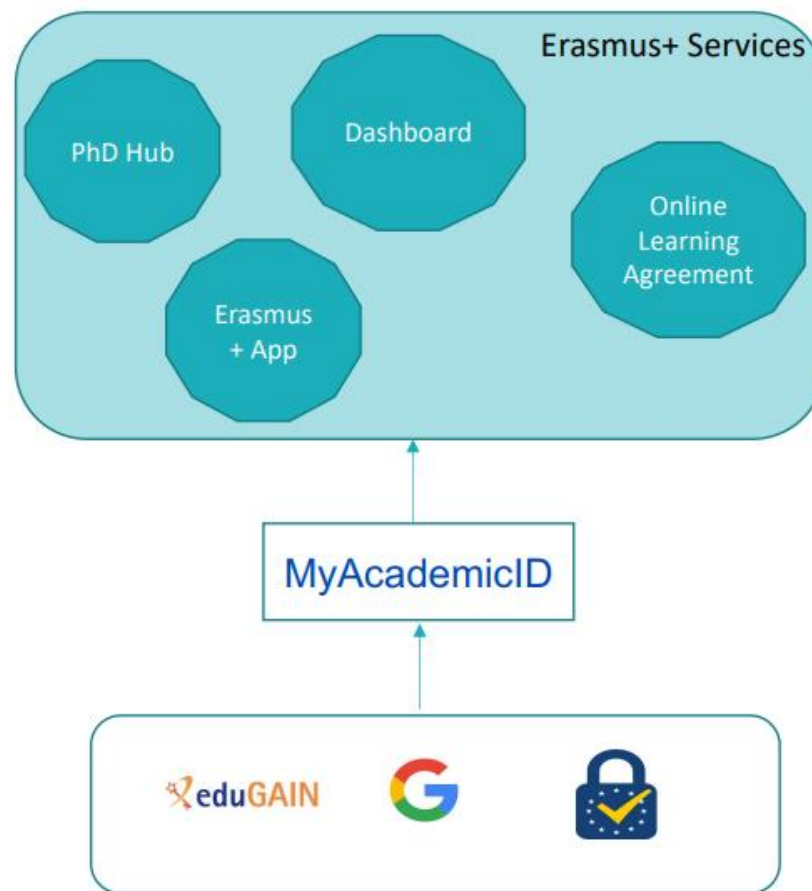


## **Authentication and identification**

- Student mobility requires knowing both who a person is and what their home university is
- Universities need to exchange students' records  
Students must be uniquely identified



## How does it work?





Currently in negotiation with DIGIT to find a stable, secure and reliable solution to eventually replace google login



## European Student Identifier- ESI

The student mobility processes require the use of a number of services, which will need to be able to exchange data about the students who are in mobility.

The European Student Identifier is **globally unique, persistent, non-targeted, protocol neutral and data transport neutral.**

**It reliably identifies students across different e-services!**

For More information: <https://wiki.geant.org/display/SM/European+Student+Identifier>



## State of play of student authentication solutions

- A big majority of ECHE holders use **EduGAIN** and issue European Student Identifier in order to allow students to authenticate in the EWP Network
- Many other ECHE holders have **national IDP solution** (Poland, France, Italy, Spain...)
- Around 500 ECHE holders are deploying an **Identity Provider of Last Resort-“whitelisted”** by E+ National Agencies for that purpose



# What is the European Student Identifier?

Depending on the qualifiers needed to make a given student code globally unique there are 2 possible formats :

## 1. ESI with nation-wide (or region-wide) student code :

urn:schac:personalUniqueCode:int:esi:<country-code>:<code>

Example : urn:schac:personalUniqueCode:int:esi: HR:xxxxxxxxxx

## 2. ESI with HEI-wide scope student code :

urn:schac:personalUniqueCode:int:esi:<shO>:<code>

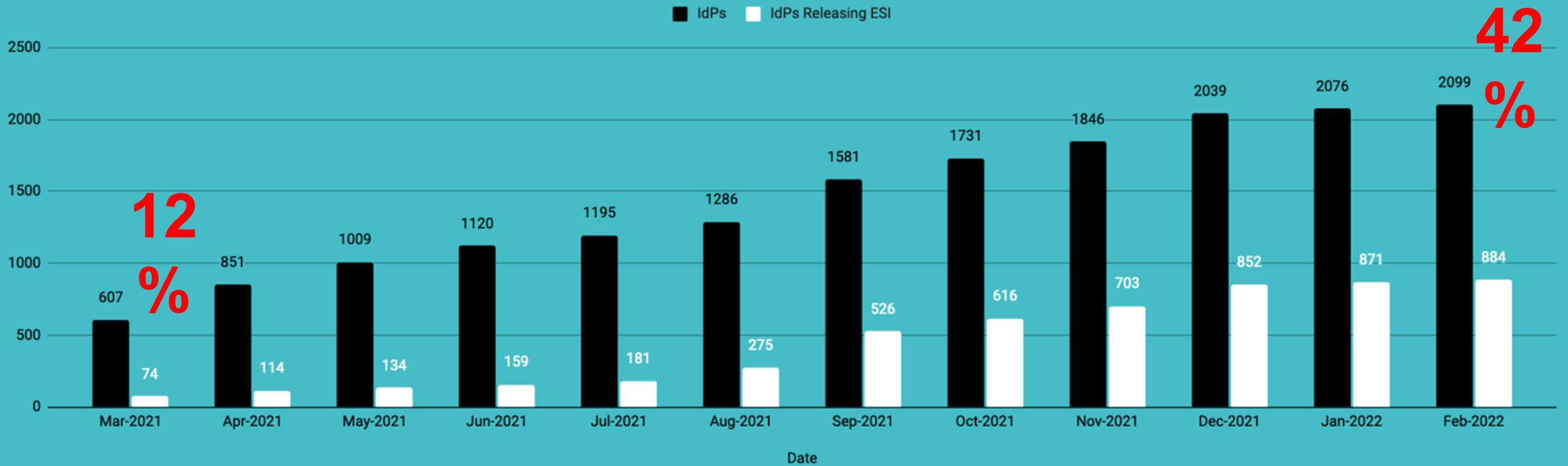
Example : urn:schac:personalUniqueCode:int:esi: example.edu:xxxxxxxxxx



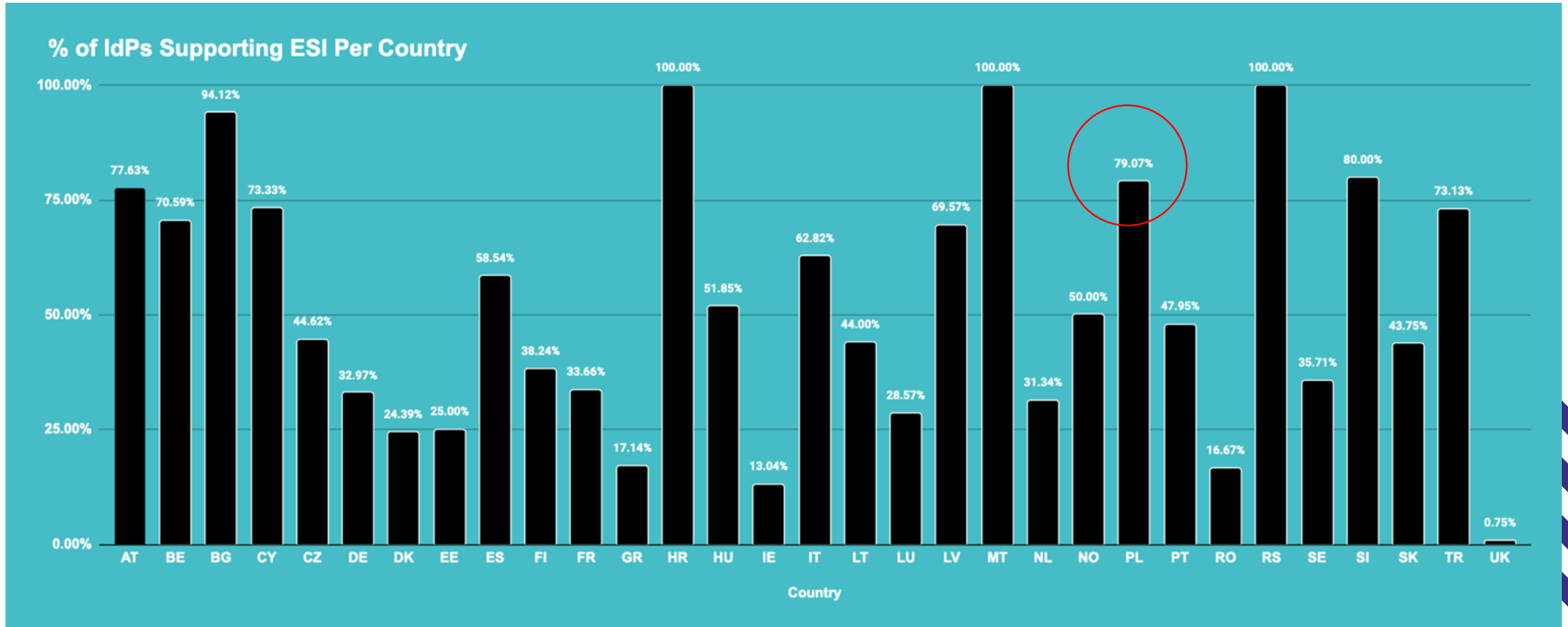


# Identity Providers releasing ESI

IdPs and IdPs Releasing ESI



# Identity Providers releasing ESI



## What is the benefit of an ESI for students?

**Students** will be able to:

- a) Authenticate their student status online in a reliable, consistent and safe way.
- b) Use their academic credentials to access multiple student e-services through a single sign-on.
- c) Use their citizen eID to enroll at higher education institutions and link their citizen and student digital identities.





## What is the benefit in deploying an ESI for HEIs?

**HEIs** will be able to:

- a) Offer their students to manage their mobility digitally
- b) Provide students with a link to a European Student e Card
- c) Manage mobility administration in an easy and simple way
- d) Be ready to future digitalization process in terms of infrastructure and services





# **European Student Card Update**

# European Student Card consortium: NTT data



UNIVERSIDAD DE MÁLAGA



**NTT DATA**



Normandie Université

**frank**



## ESC FWC: Develop, implement and support the changing of existing student cards into European Student Cards (ESC)

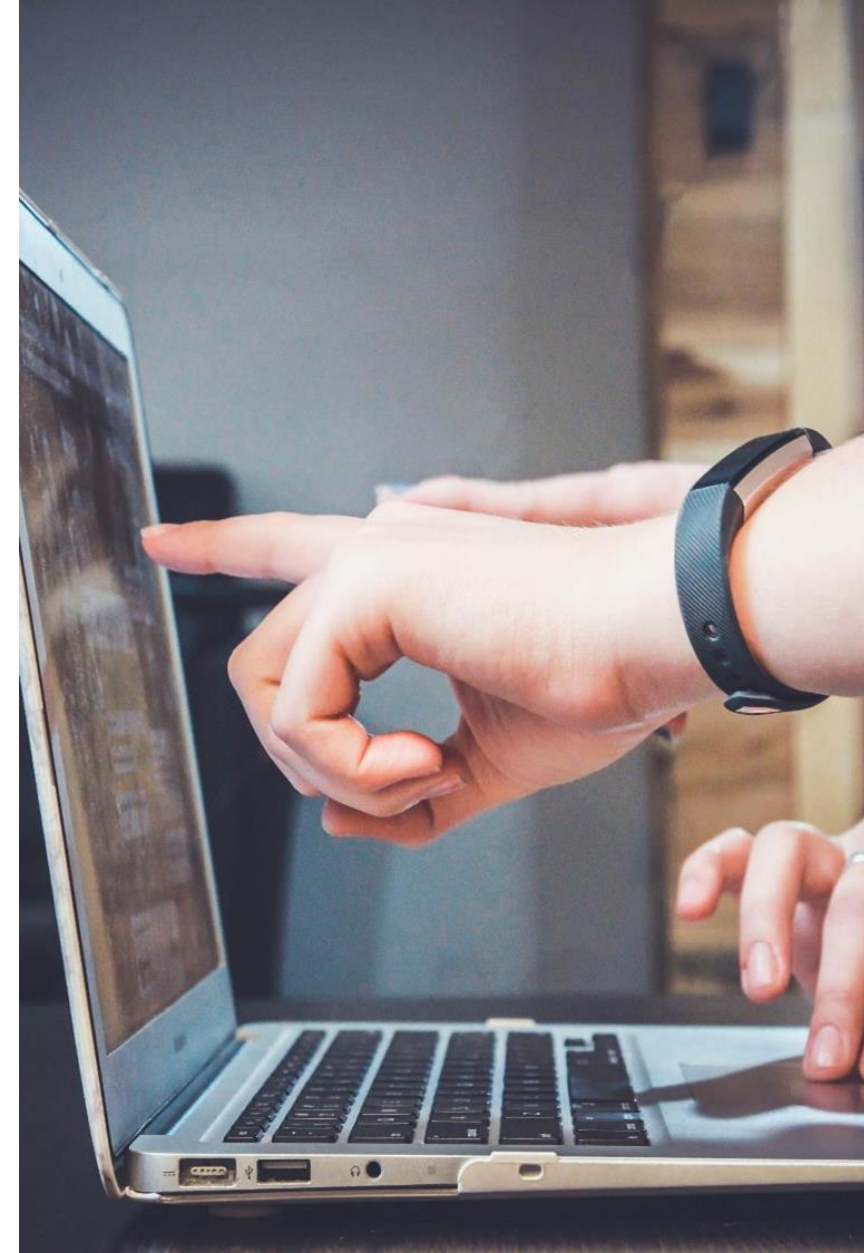
- **Promote** the ESC towards students and other stakeholders and working on a positive image and brand recognition
- **Further develop** an information system to keep track of issued cards and validate student status. This system will be sound, inclusive and secure hosted at the European Commission's data centre or cloud
- **Define and coordinate** business processes that will enable cross-border recognition of the ESC and student status
- **Support** card issuers in issuing ESCs with correctly implemented European Student Identifiers
- **Support** higher education institutions to accept and recognise the ESC and offer the same level of services to foreign and local students
- **Inform** students about the benefits of the ESC; and engage important stakeholders and ensure visible communication about the initiative



# Indicative Timeline

The project will take 4 years overall ~ end 2025

- **1<sup>st</sup> phase:** Inception/Analysis
- **2<sup>nd</sup> phase:** Deployment in selected Erasmus+ HEIs
- **3<sup>rd</sup> phase:** The European Student Card should be available in all Erasmus+ participating countries by 2025 (through the European Student Identifier available to all students in universities in Europe by mid-2024)







# Latest Updates (1)

**Baseline Study** is almost finalised:

- Country analysis completed, preparation of country fiches ongoing
- Definition of criteria to assess ESC readiness currently ongoing
- Drafting of baseline study initiated

**Stakeholders Mapping** is at 50%

## **IT Infrastructure**

- AS-IS analysis submitted and currently reviewed by our technical team
- TO-BE (including the IT solution architecture) and gap analysis drafting initiated





# Latest Updates (2)

## **Communication Strategy**

- Started drafting Communication Strategy
- Co-Definition of target audience(s) in development

## **ESCI informational portal**

- Progressing with information architecture and wireframes design
- Organisation of multiple sessions to co-define architecture and goal of the portal are scheduled

E-mail for **Helpdesk** already set and active: [ESC.support@nttdata.com](mailto:ESC.support@nttdata.com)



# Spring events

- **9-10 March:** OLA 3.0 small-scale workshops
- **April:** “Erasmus Going Digital” webinars for Dashboard and Network users:

*Dashboard Thursday 6 April 11:00 – 12:30*

*Network Thursday 6 April 14:00 - 15:30*

- **29 March:** Erasmus+ App conference in Budapest
- **18 May:** EDSSI final conference in Thessaloniki



# Erasmus+ app event in Budapest and online

- 29th March 2022, 10.00 - 16.00 CEST
- *Online and onsite*
- *Registration and information here: <https://www.elte.hu/en/content/ErasmusApp-conference>*
- *Goal: present what the Erasmus+ App offers to the European Higher Education community with a special focus on how it can further support international mobility.*
- *Participants will explore the exciting features the App can offer the higher education community*
- *Brainstorming and discussion on how we can further develop and enhance the Erasmus+ app*





**Q&A**

